

Versatile. User-friendly.
Integrated.

core nova 

core nova 

For genuine process support:
OR integration by Richard Wolf



Versatile. User-friendly. Integrated.

Richard Wolf understands what happens in the operating room (OR) and what is important. This information has enabled Richard Wolf to develop the **core nova** OR Integration System.

core nova is versatile, user-friendly, integrated and consistently different. A function is only integrated in **core nova** if it can be applied intuitively and yields benefits in the operating room. In other words: **core nova** is the sum of all effective functions for an OR integration which knows about the things that really matter.



Consistently different

■ Software

instead of hardware:

The functions of **core nova** are largely achieved through software. This means a very small footprint and resources for installation on site. Function expansions can generally be easily installed by an upgrade.

■ Investment security

as a result of scalability:

Requirements and needs change over the course of time. **core nova** takes change into account through its modularity and ability to expand. You can start with a small, cost-effective solution and expand this later by adding functions and components.

■ Use of existing infrastructure:

Whether the infrastructure relates to servers or cabling, **core nova** can be installed on the IT landscape that already exists in the hospital. This means very short installation times, e.g. one day for each operating room. Particularly for refurbishment during current operating activities this generates cost-savings.

■ Support for parallel processes:

Several control terminals can be used at the same time. Although they are synchronized, they can be used independently of each other. For example, one control terminal can be used to operate instruments in the sterile field, and another can be used on the wall for documentation by a stand-in.

■ Mobile and Stationary solutions:

core nova can already be applied with an equipment cart that can also be used for several operating rooms. A large number of combinations and versions are possible including stationary solutions for each operating room.



“We are very satisfied with the core nova system – It enables us to operate with the most advanced technology and to document our work. An integrative OR system makes work easier, saves time and is enjoyable.”

***Dr. Moritz von Frankenberg (PD)**
Deputy Medical Director for Surgery
at the Salem Hospital, Heidelberg*

You will find other information
at our website:

www.core-nova.com

Versatile. User-friendly. Integrated.

core nova focuses on offering the user genuine added value.

A large number of additional effective solutions are integrated in the core functions of documentation, video routing and device control. All these solutions share features such as uncomplicated handling, simple installation and intelligent integration.

Integration in hospital systems:

core nova supports DICOM and HL7 standards (API on request).

Image sources: Additional image sources, such as OR light camera, ultrasound, etc. can be integrated in a fixed configuration or flexibly using a multi-signal converter.

Documentation: All image sources available in video routing can be documented. A still image or a video can be triggered in a number of ways including the control terminal.

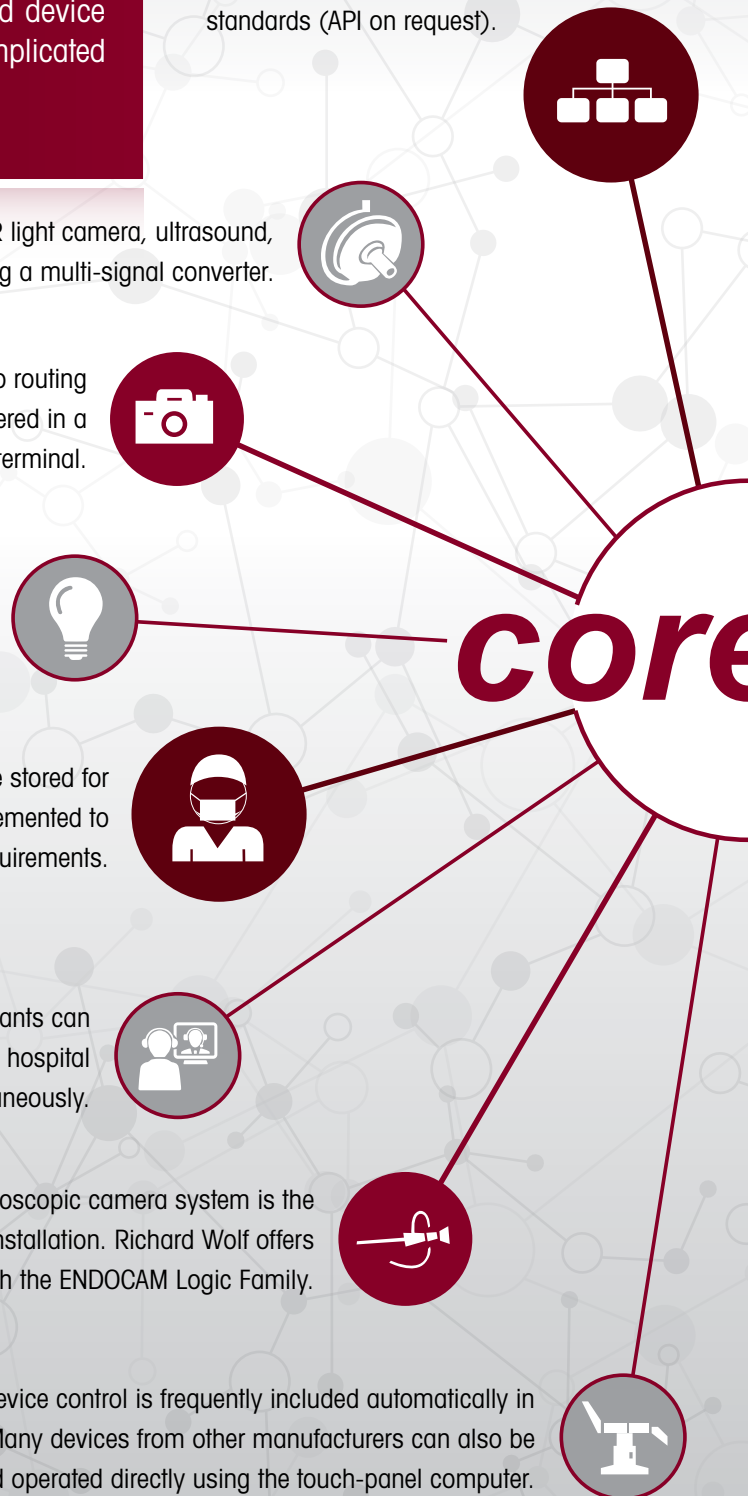
Uncomplicated: **core nova** can be operated in an uncomplicated approach and intuitively with easy-to-use interfaces, lots of options for adjustment and convenient touch-panel computers.

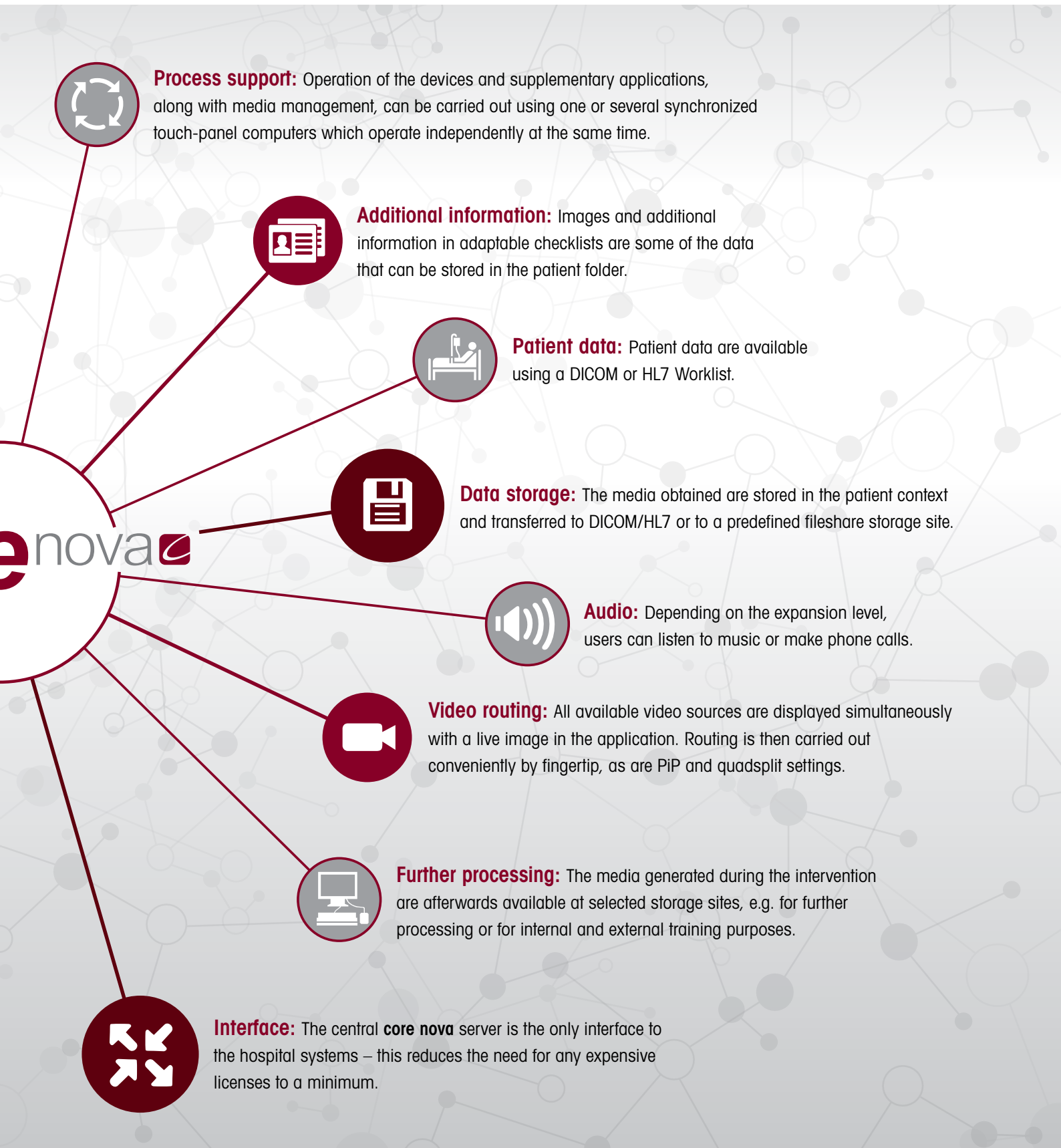
Presets: Presets for frequently repeated procedures are stored for the devices. Naturally, these can be adjusted and supplemented to meet individual requirements.

Conference room function: Up to five participants can receive a stream from an operating room within the hospital network simultaneously.

Endoscopic imaging: The endoscopic camera system is the centerpiece of every **core nova** installation. Richard Wolf offers solutions from HD to 4K with the ENDOCAM Logic Family.

Device control: Device control is frequently included automatically in Richard Wolf devices. Many devices from other manufacturers can also be linked up and operated directly using the touch-panel computer.





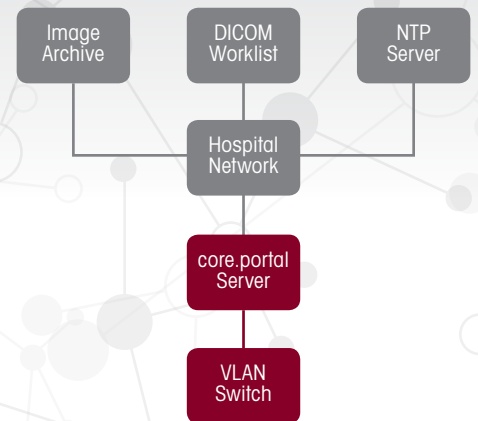
Versatile. User-friendly. Integrated.

core nova fits into the existing IT landscape of the hospital. This saves costs and time during installation.

A dedicated back-up strategy is not necessary because no data is stored in the system and on devices.

If a device fails at any time, it can be exchanged during ongoing operations thanks to plug & play.

With core nova OR integration really is not complicated at all!



core nova on an equipment cart ...

- **Display** of the live image from the endoscopy camera on the monitor
- **Control** of the integrated devices using a touch-panel computer (e.g. insufflator or HF device)
- **Documentation** in DICOM or fileshare when using the core.portal server
- **Many other functions**, e.g. streaming into the hospital network or checklists

... in several ORs

core nova offers maximum flexibility in OR integration. Many functions can already be achieved using a mobile version on an equipment cart. This can be deployed in different operating rooms.

A combination of mobile and fixed installation solutions is also easily feasible.

The **core.portal server** is supplied as an image of a virtual machine and can be integrated as such in an existing infrastructure of a computer center. It behaves like an imaging modality and therefore forms the interface between the hospital IT and the operating rooms. This can reduce the need for any expensive licenses to a minimum.

An individual, dedicated VLAN has to be set up for each integrated operating room. The interface to **core nova** is a network socket in the operating room. **core nova** establishes and manages the **network** for medical devices in the operating room from there.

core nova is subject to the **security concept** of the hospital. Only devices with an appropriate digital certificate can be registered within the **core nova** system. This is generally included with Richard Wolf devices and is provided through drivers in the case of third-party devices.



core nova is a streamlined system which carries out most of the functions using software. The few hardware components can easily be accommodated on an equipment cart or a ceiling supply unit.

A **technology room** is no longer required – that saves space and costs.

core nova as fixed installation

- **Routing** of the integrated video sources on up to four monitors
- **Control** of other video sources, e.g. room camera or from mobile devices
- **Control** of integrated devices using one or more touch-panel computers on the spring arm or for wall mounting
- **Integration** of stationary devices from third-party manufacturers, e.g. OR table
- **Documentation** in PACS or fileshare when using the core.portal server
- **Many other functions** e.g. streaming into the hospital network, audio or checklists

core nova 





Specifications subject to change without notice.

OR 013.VII.17.en.2