

Bright. Clear. True.



PANOVIEW
ULTRA

A New Generation of Ultra High Resolution
Telescopes

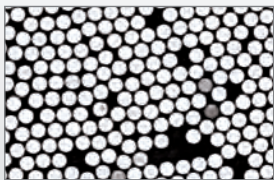


Bright. Clear. True.

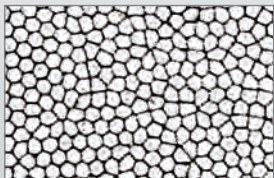
With improved fiber optics and a superior lens system, Richard Wolf's new PANOVIEW ULTRA telescopes are optimized for ultra high-definition 4K imaging. The optics housed in this series deliver a stunning level of brightness and clarity, bundled with exceptional steam sterilization durability.

Bright

The demand for ultra high resolution imaging in the OR requires telescopes that are capable of transmitting more light to a given surgical area. That's why we created the new PANOVIEW ULTRA line. With an increased number of advanced optical fibers, these telescopes deliver more light than those made with standard fiber optic technologies.



Standard light cable with adhesive filler reduces light output.



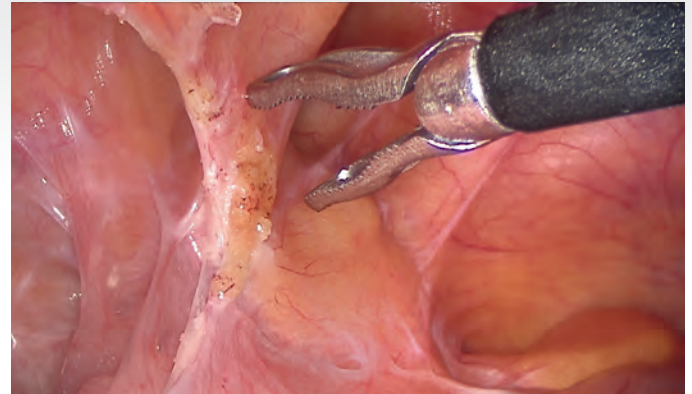
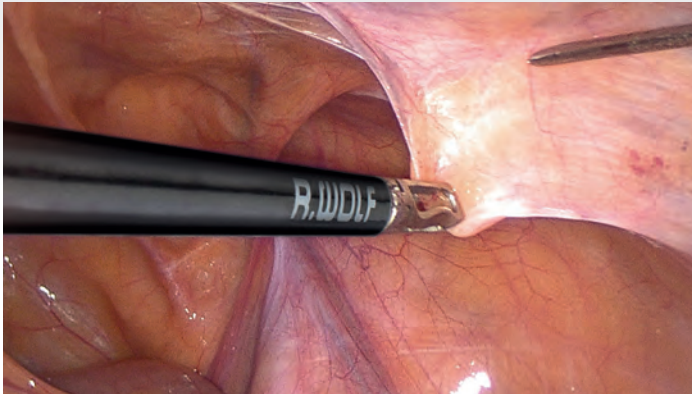
Fusion
High temperature resistant light cable with reduced filler enhances light transmission.

Clear

PANOVIEW ULTRA telescopes are engineered with extra low dispersion glass rod lenses, which control chromatic aberrations and enhance image quality. The result: improved peripheral sharpness and a balanced sharpness gradient over wide fields of view and deep focal ranges.

PANOVIEW ULTRA performs best when used with Richard Wolf's 5 mm \varnothing *Fusion* light cable.

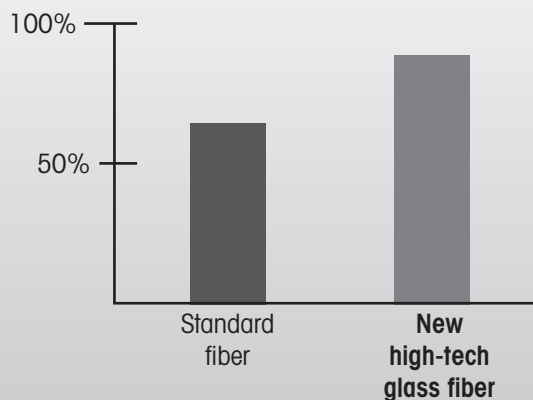




True

Telescopes with traditional optic technologies can cause chromatic aberration, which is the distortion of color during light transmission. The advanced fiber optics housed in the PANOVIEW ULTRA telescopes, however, generate brilliant natural color rendition as a result of superior light transmission in the white spectrum and reduced color shift.

Relative Light Transmission After 500 Autoclave Cycles



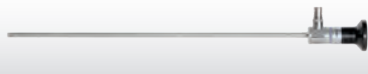



Simple Handling and Enhanced Sterilization Durability

The new line of PANOVIEW ULTRA telescopes can be used with light cables that are recommended for both 5 mm and 10 mm telescopes. This versatility prevents heat damage and eliminates the potential for staff error.

Our telescopes and light cables are both color coded, which makes selecting the right light cable very intuitive.

In addition to delivering brilliant illumination, the light fibers featured in the PANOVIEW ULTRA line are extremely durable. Extensive testing has shown that these telescopes maintain higher light transmission after hundreds of steam sterilization cycles than those made with traditional light fibers.

Telescopes:

	PANOVIEW ULTRA Telescope 5.5 mm, 0°, 300 mm WL8935461
	PANOVIEW ULTRA Telescope 5.5 mm, 30°, 300 mm WL8935462
	PANOVIEW ULTRA Telescope 5.5 mm, 0°, 430 mm WL89354416
	PANOVIEW ULTRA Telescope 5.5 mm, 30°, 430 mm WL89354426

Recommended Light Cables:

Fusion Fiber Light Cable Kit 806550301

high-temperature resistant, ø 5.0 mm, 3 m long

comprising:

Fiber light cable (80655030),

Adapter projector side (809507)

and adapter endoscope side (809509)

Accessories:

Single scope tray 8570017



Dual scope tray 8570005

