

Pass the Limits

Sensor bronchoscope "Slim"

3.3 mm bronchoscope with integrated
LED illumination and distal image sensor

Flexible sensor bronchoscope "Slim"

The specialist for peripheral lung areas and pediatrics

Technological and medical progress are constantly opening up new therapeutic and diagnostic possibilities, even in areas that were previously difficult to access.

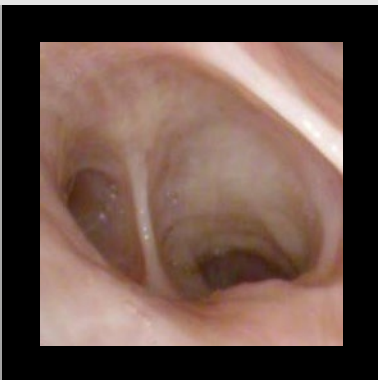
Not least for this reason, more and more pulmonologists are looking to perform endoscopic applications in the peripheral areas of the lung.

Thanks to its ultra-slim design and excellent technical features, the new, flexible sensor bronchoscope "Slim" uniquely meets the requirements for performing diagnostic procedures far into the depth of the lung.

During its development, Richard Wolf consistently applied the latest technologies. The image sensor is located right where the action takes place – at the tip of the instrument. This achieves a significantly higher resolution compared to analog image guide technology. The LED illumination is integrated in the endoscope and eliminates the need for a separate light source.

With an outer diameter of only 3.3 mm and a working channel diameter of 1.5 mm, the endoscope is predestined for an extremely patient-friendly application. It is particularly suitable for biopsy collection in patients with a peripheral coin lesion, but also for pediatric application and small anatomies in general.

The combination of the "Slim" sensor bronchoscope with a camera controller of the latest generation offers possibilities that are unparalleled in this class.



Sensor bronchoscope image



150° upward and downward articulation



Flexible 1-channel Sensor bronchoscope "Slim"

- 3.3 mm outer diameter, beveled distal tip
- 1.5 mm working channel diameter
- 680 mm working length
- 150° upward and downward articulation
- LED illumination via two LEDs, no separate lightsource necessary
- Image sensor integrated in instrument tip – direct image capture without transmission losses
- Two programmable camera head buttons
- Special Imaging Mode (SIM) compatible
- Ergonomic handle
- Axial cable outlet
- Compatible with **ENDOCAM Logic 4K** and **ENDOCAM Logic HD**

3.3 mm outer diameter, beveled distal tip

Flexible sensor bronchoscope "Slim"

Order data and technical data

Flexible sensor bronchoscope "Slim"

Sensor bronchoscope	
Ø 3.3 mm WL 680 mm	7235011
For this:	
Biopsy valve holder	15114175
Sealing valve (pack of 20), red	15114.052
Suction valve (PACK=20 PCS), sterile, for single use	4565901M
Flexible biopsy forceps	
3 Fr., WL 920 mm	829.601
Leak tester	163.903
Pressure equalization valve	163.904
Irrigation adapter for the automatic cleaning	163912
Cleaning brush for suction/working channel connections (PACK=50 PCS), for single use	7980002
Cleaning brush for suction/working channel (PACK=10 PCS), unsterile, for single use	7990001
Luer sealing cap	15023205

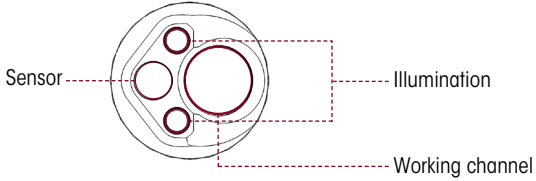
ENDOCAM Logic HD Controller cpl.

Comprising:

ENDOCAM Logic HD Controller (5525101), USB handheld remote control (5525401), USB flash memory 8 GB (56540028), CAN-BUS terminator (5590.989), HDMI/DVI-D cable, lockable, 3.0 m (103843), power cable (2440.03)

55251011

For other compatible ENDOCAM Logic HD and ENDOCAM Logic 4K camera controllers see Imaging catalogue.

Technical data	
Number of working channels	1
Outer diameter	3.3 mm
Working/irrigation channel ø	1.5 mm
Deflection	150° upward, 150° downward
Working length	680 mm
Angle of view	90°
Illumination	Two LEDs, no separate lightsource necessary
Handle	Ergonomic handle design with axial cable outlet
Position of the working and irrigation channel relative to the image	At 9 o'clock
Distal surface	
Endopicture	Square, digital 6x zoom Automatic white balance, light control and focus
Compatible camera controller	ENDOCAM Logic 4K ENDOCAM Logic HD ENDOCAM Logic HD lite