

Feel the
difference



RIWO 
D-URS

Re-thinking Ureteroscopy—
the best of both worlds

RIWO D-URS

Re-thinking Ureteroscopy—the best of both worlds

Richard Wolf has been one of the pioneers in the field of endoscopic stone treatment ever since the first generation of flexible and semi-rigid ureteroscopes, and consistently impresses its customers with excellent products for ureteral and kidney stone treatment.

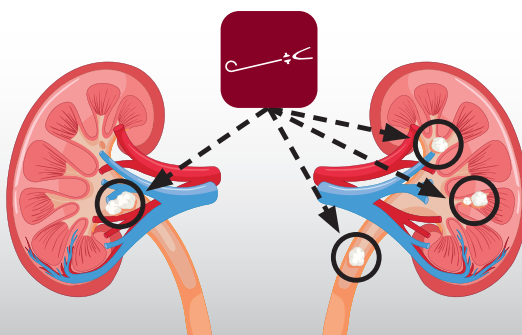
The objective in developing the RIWO D-URS was to revolutionize ureteroscopy. An entirely new product concept combines the advantages of the semi-rigid URS with those of the flexible URS, thereby creating new application options.

An instrument that prioritizes ease of use, features ideal ergonomic handling and maneuverability, and excellent image quality for disposable endoscopes. All this is combined with a unique 3-channel solution that opens up completely new possibilities for designing your procedure.

Rediscover your next procedure as an entirely new experience.



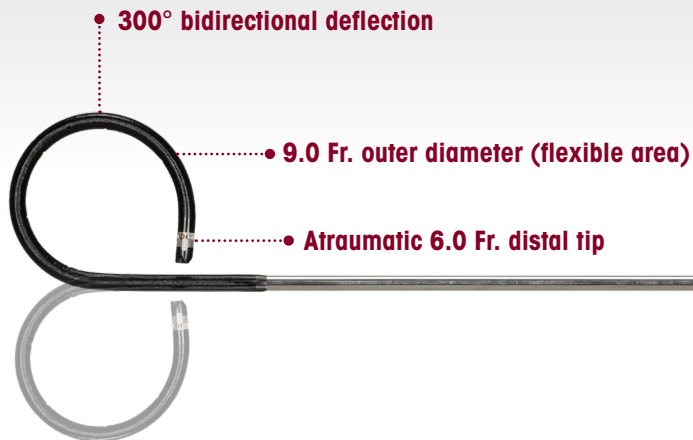
The best of both worlds—combined for the future



The RIWO D-URS can be used to remove stones from both the ureter and the renal pelvicalyceal system.

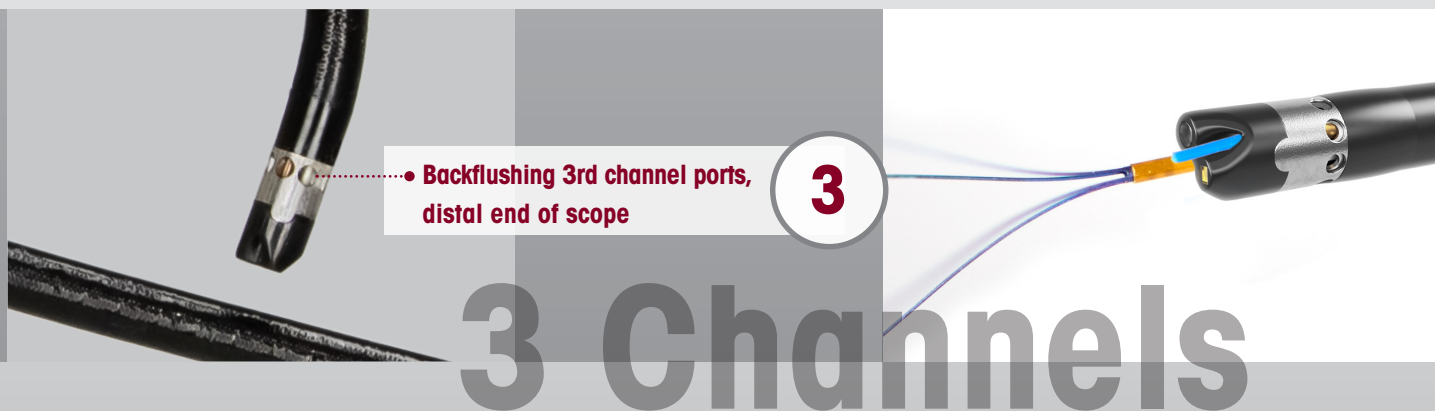
RIWO D-URS

Efficient treatment



Efficient treatment

- The 3-channel solution: works simultaneously with a stone basket and a laser fiber with continuous backflushing even without a ureteral access sheath
- Can be used instead of a cystoscope or semi-rigid URS for placing the guide wire
- Both ureteral and kidney stones can be treated
- Cuts down on standard instrument requirements
- No need to change instruments
- Ideal for solo surgery



RIWO D-URS

Brilliant technology

8.1 Fr. outer diameter (semi-rigid area)

600 mm working length

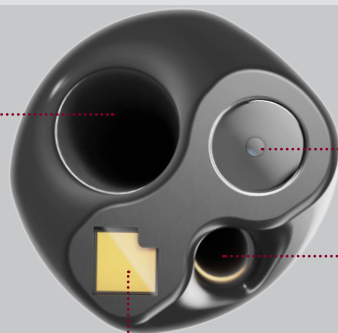
Ø 3.0 mm luer connection for outflow

Brilliant technology

- Combination of semi-rigid sheath and flexible distal tip
- Atraumatically shaped instrument tip for easy passage of ureteral stenosis
- 300° bidirectional deflection of the distal tip
- Continuous irrigation possible via a third channel integrated in the instrument sheath
- Outstanding depth of field thanks to latest CMOS sensor technology
- Distal LED for homogeneous illumination of the surgical area without overexposure and reflections

1

Working Channel, 3.6 Fr.
11:00 position



Camera (CMOS sensor technology)

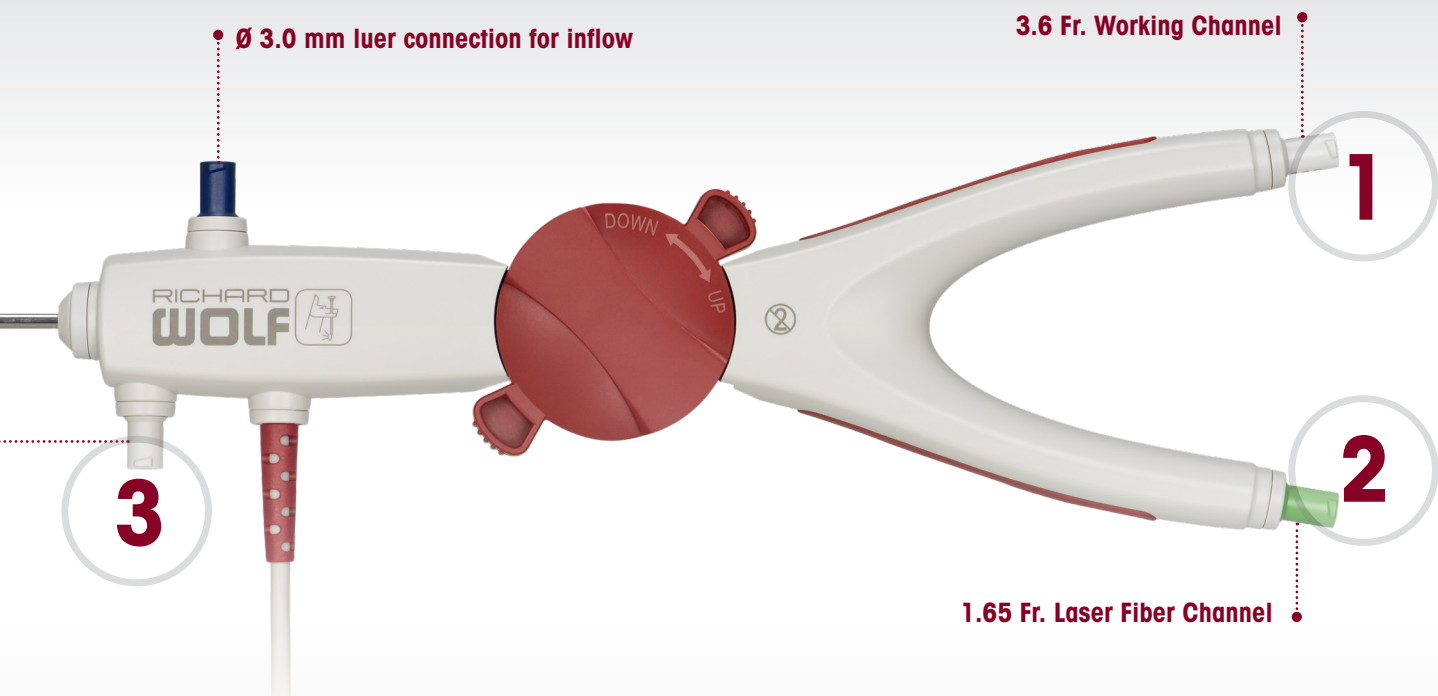
Laser Fiber Channel, 1.65 Fr.
5:00 position

2

Digital

LED light source

Unique ergonomics



Unique ergonomics

- Unique handle design enables new approach
- Handle designed with non-slip silicone inlays
- Surgery can also be performed comfortably while seated
- Various ergonomic hand-positioning options available
- Direct transmission of hand movement to the flexible distal tip



Disposable

RIWO D-URS

Sets new benchmarks in ergonomics and handling

Sit or stand—your choice.

The **RIWO D-URS** gives you the ability to either sit or stand while operating; maximizing ergonomics and flexibility, especially during longer procedures. In addition, the lightweight design enhances surgeon comfort. The **RIWO D-URS** weighs much less than traditional ureteroscopes and can be used in a sitting or standing position.



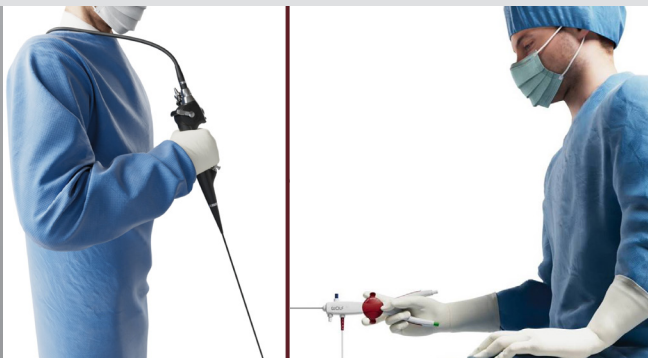
Ergonomics meets freedom of movement

The unique handle design gives you enormous freedom of movement. While the handle is limited to approximately 90° in the case of a standard flexible ureteroscope, the new **RIWO D-URS** enables **the instrument to be rotated 180°** around its axis, ensuring your arm is in a relaxed position. The instrument allows you to perform the procedure while sitting, making your work much more convenient and less tiring.

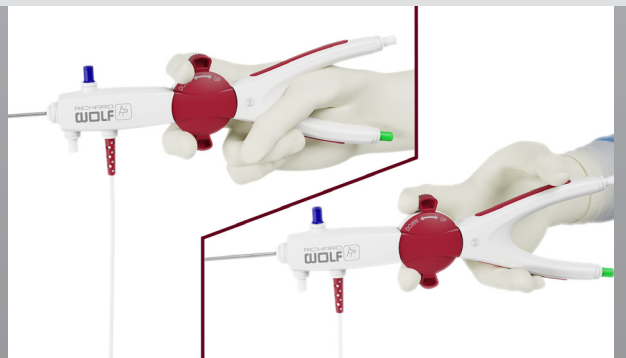
With the new **RIWO D-URS**, you can also perform the procedure conveniently from hip-height while wearing an X-ray apron. The **high torsional rigidity** of the sheath directly transmits your hand movements on the handle to the distal tip.

Easy introduction—quick progression

Thanks to its new handle design, the **RIWO D-URS** makes stone therapy applications significantly easier. The **intuitive handling** provides a perfect introduction to ureteroscopy.



Traditional positioning vs. RIWO D-URS positioning



Individual handling—various ways to grip



Patient-friendly with excellent visibility

Continuous irrigation in flexible ureteroscopy

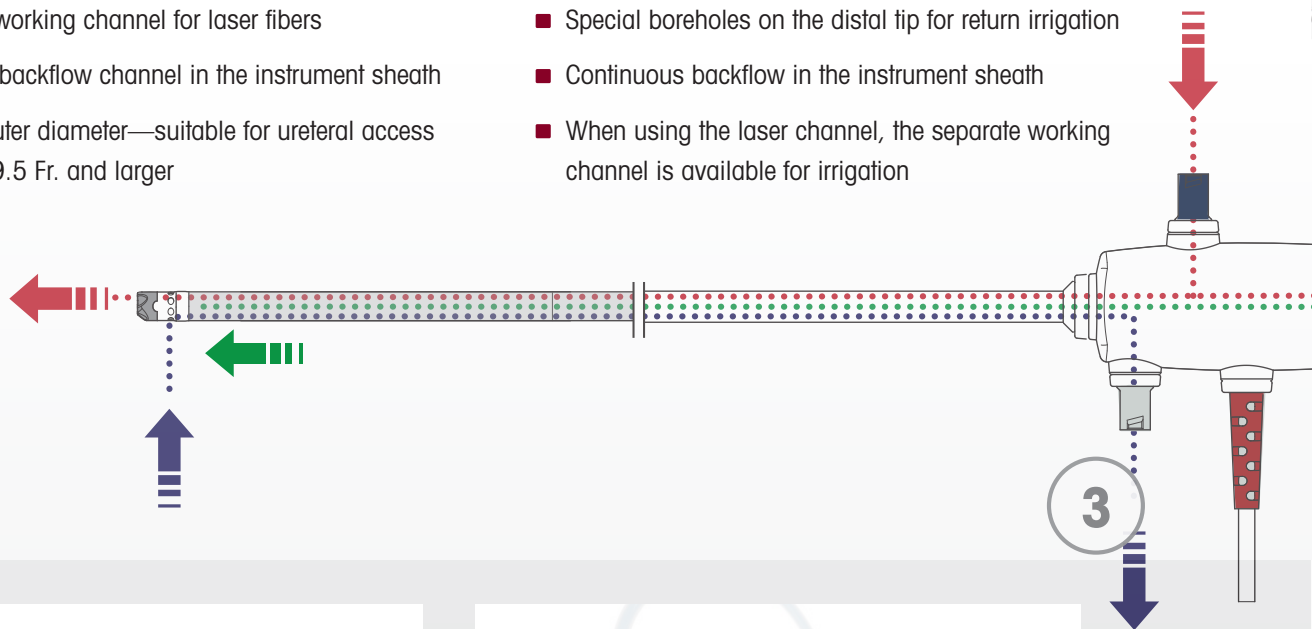
A separate backflow channel helps facilitate consistent pressure and temperature conditions inside the kidney. Visibility is maintained even when a laser fiber is inserted. Continuous irrigation ensures constant backflow even without a ureteral access sheath.

Unique 3-channel Solution

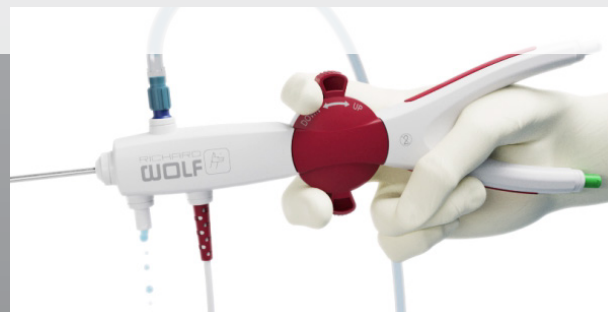
- 3.6 Fr. working channel for auxiliary instruments
- 1.65 Fr. working channel for laser fibers
- Separate backflow channel in the instrument sheath
- 9.0 Fr. outer diameter—suitable for ureteral access sheaths 9.5 Fr. and larger

Dedicated Irrigation Channel

- Excellent visibility thanks to continuous irrigation
- Special boreholes on the distal tip for return irrigation
- Continuous backflow in the instrument sheath
- When using the laser channel, the separate working channel is available for irrigation



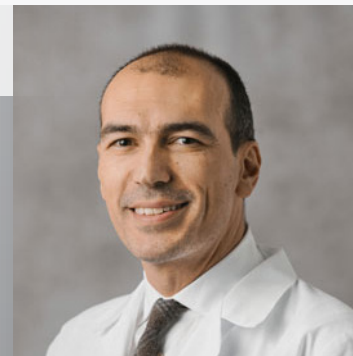
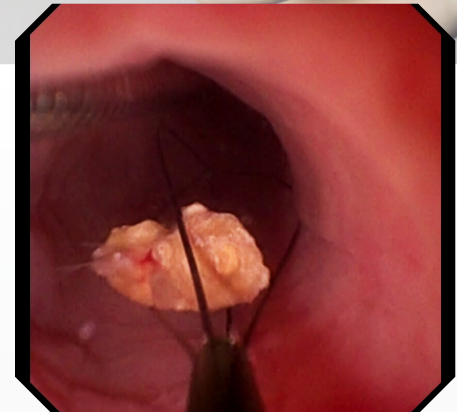
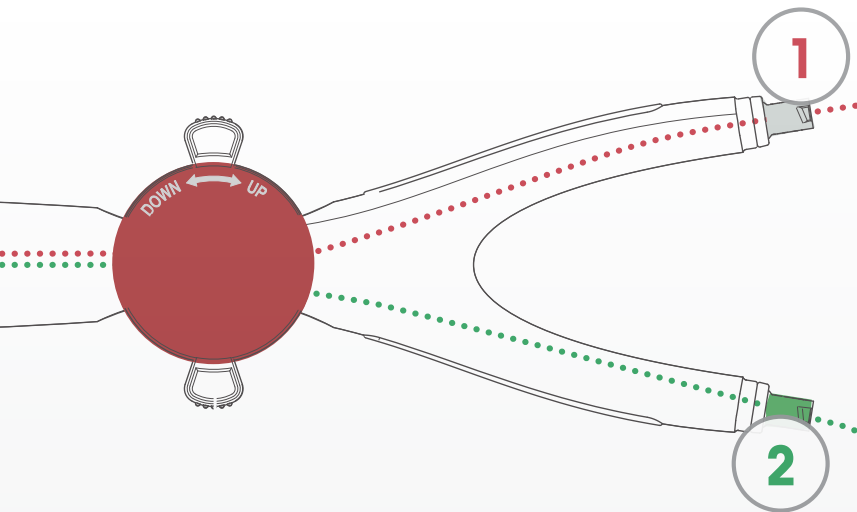
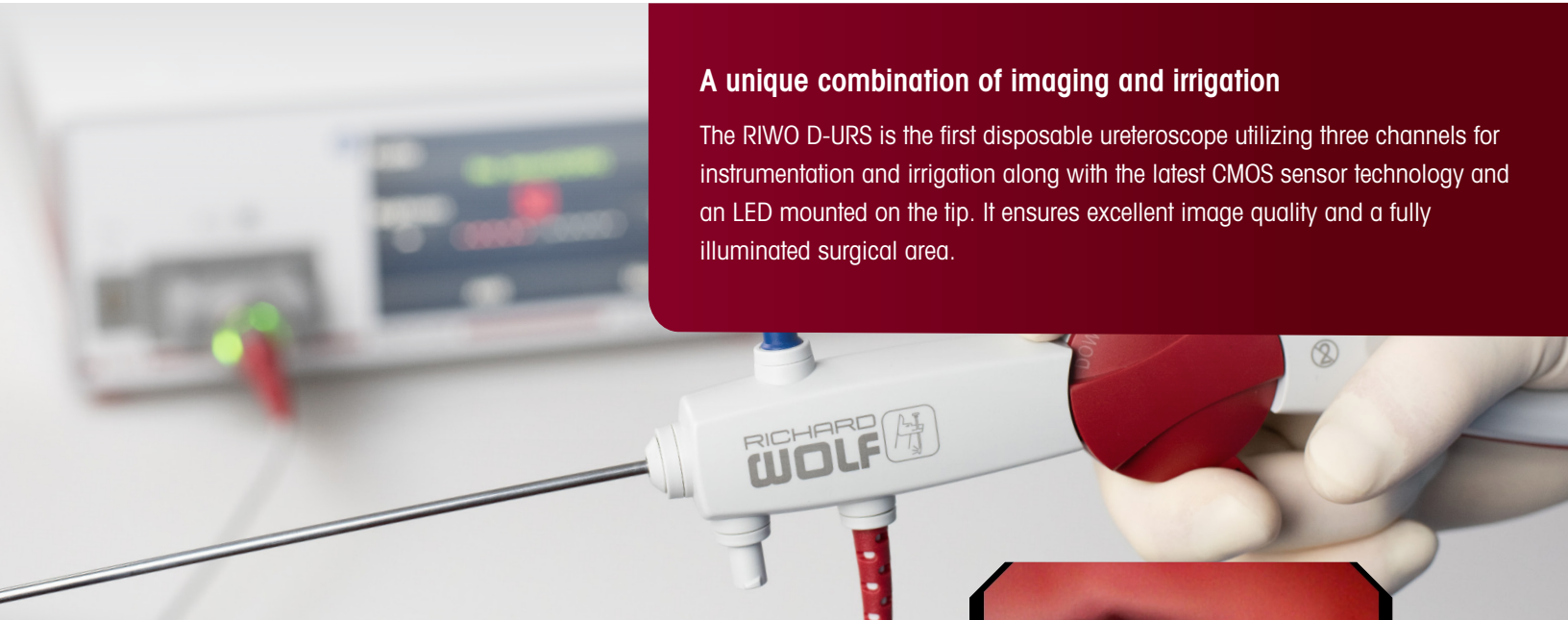
Optimized backflow via third channel



Constant backflow of irrigation fluid

A unique combination of imaging and irrigation

The RIWO D-URS is the first disposable ureteroscope utilizing three channels for instrumentation and irrigation along with the latest CMOS sensor technology and an LED mounted on the tip. It ensures excellent image quality and a fully illuminated surgical area.



"There are many new things about this instrument. I will start with the big novelty, which is the hybrid, rigid, flexible instrument. This is a new concept, and essentially it puts together the advantages of having a rigid ureteroscope and a flexible one, which means a lot of things. It means that using the D-URS, I can actually do a rigid ureteroscopy and treat a stone in the ureter, but at the same time I can also treat stones in the upper urinary tract, up in the kidney, upper pole, lower pole without the need of changing instruments."

Simone Crivellaro // MD, MHA

Vice Chair and Associate Professor of Urology, University of Illinois Chicago

RIWO D-URS

An efficient instrument using a hybrid approach

Optimize your time with less instrumentation

The **RIWO D-URS** design enables two indications—ureteral and kidney stones—to be treated with just one instrument.

That means it's no longer necessary to change instruments if the anatomy and situation allow it.

Over the long term, you can reduce:

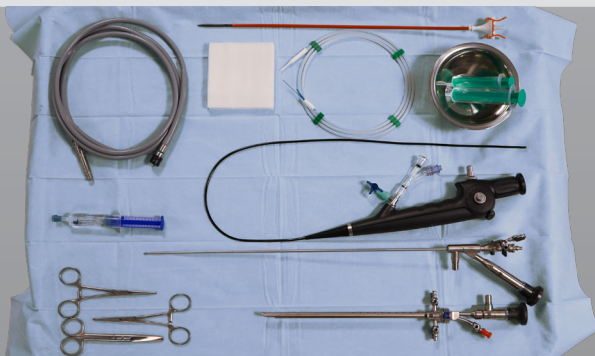
- Unexpected delays and repair costs
- Instruments per procedure
- Long sterilization processes
- Central Sterile Services Department (CSSD) costs
- No need for additional OR personnel

Improving efficiency in multiple ways

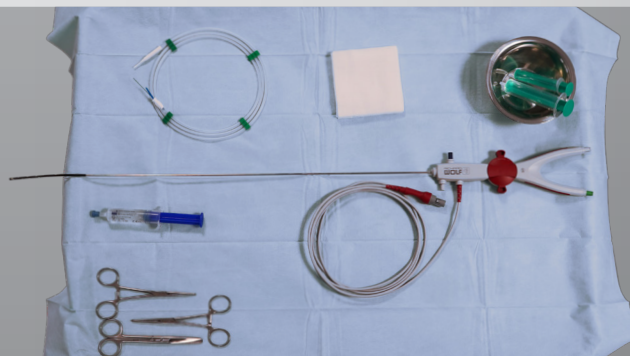
- Simplified work steps thanks to **new design**
- One instrument **performs** different work steps
- **"Solo surgery"**—the procedure can be performed without assistance
- Direct insertion of the instrument possible **without a ureteral access sheath**

Fewer instruments, lower cost! Based on patient anatomy, the following instrumentation may not be needed:

- Flexible or semi-rigid ureteroscope
- Ureteral access sheath
- Cystoscope
- Light cables



Conventional instruments



Your RIWO D-URS instruments

Meets the ENDOCAM® family

ENDOCAM D—Small, but mighty

The **ENDOCAM D** is specially designed for the **RIWO D-URS** and ready for use at the push of a button.

Thanks to its compact and portable design, the **ENDOCAM D** significantly reduces your equipment footprint, especially in Operating Rooms where space is limited.

Despite its size, the **ENDOCAM D** offers a brilliant endoscopic image and a multitude of features to enhance convenience and flexibility.

- Intuitive and easy operation
- Compact and low profile: 200 mm x 240 mm x 67 mm (W x D x H)
- Multiple video output signals and video formats for added flexibility
- Image and video documentation on a USB storage device
- 3 function buttons:
 - Start/Stop Video
 - Image Capture
 - Zoom (3 levels)
- Ideal supplement to existing systems

Flexibility of choice.

Choose to utilize the **ENDOCAM D**, a stand-alone camera controller only for the **RIWO D-URS**, or the **ENDOCAM Logic camera system**, a platform solution compatible with multiple camera heads, digital endoscopes and the **RIWO D-URS**.

RIWO D-URS & ENDOCAM®Logic camera platform

For existing **ENDOCAM Logic camera platform** customers:

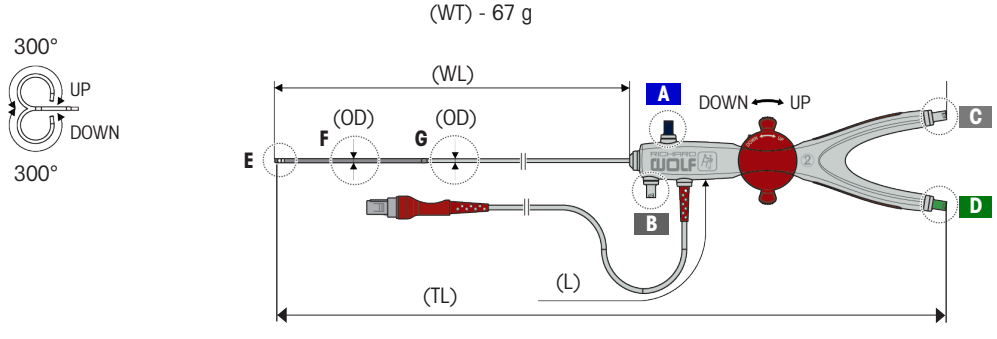
- Take advantage of the new **RIWO D-URS** with a specially developed adapter, plus continued access to Richard Wolf's **ENDOCAM Logic family of camera heads and reusable flexible sensor endoscopes**
- Maintain full utilization of the system and its features:
 - Image and video documentation on a USB storage device
 - Connection to printer for printouts
 - Entry of patient data and customizable profiles via keyboard

ENDOCAM D
camera controller



ENDOCAM Logic 4K
camera controller with RIWO D-URS
adapter

Technical data



Working length (WL)	600 mm
Total length (TL)	830 mm
Cable length (L)	2,500 mm
Outer diameter (OD) (flexible area) F	9 Fr.
Weight (WT)	67 g
Outer diameter (OD) (semi-rigid area) G	8.1 Fr.
Distal instrument tip E	6 Fr.
Working channel (C)	3.6 Fr.
Laser fiber channel (D)	1.65 Fr.
Deflection	+/-300° (upward/downward)
Direction of view	0°
Angle of view	90°
Luer connection for inlet, color: blue A	Ø 3.0 mm
Luer connection for outlet, color: gray B	Ø 3.0 mm
Luer connection for working channel, color: gray C	Ø 3.0 mm
Luer connection for laser fiber channel, color: green D	Ø 3.0 mm

Ordering Information

RIWO D-URS

Sensor Ureteroscope 9 Fr. WL 600 mm
 PU = 3 PCS.....**473572076**

Camera Controllers

The **RIWO D-URS** is compatible with the following Richard Wolf camera controllers using the adapter (5525410).

ENDOCAM Logic HD Camera Controller.....5525106
ENDOCAM Logic HD *lite* Camera Controller5525201
ENDOCAM Logic 4K Camera Controller5525301
Adapter for ENDOCAM Logic Camera Controller.....5525410

* Software version V2.0.9 or higher

ENDOCAM D Camera Controller Bundle

comprising:

ENDOCAM D Camera Controller (5522101), HDMI/DVI cable 3.0 m lockable (103843), Coaxial Cable Vektor Plus 3.0 m (DZGR-0300-SW-GN), License for open source software (72321911), Power cable (N710171).....**55221015**

Also:

Manual remote5525401
2 Port HDMI 18G Bi-Directional Switch.....38336

Recommended accessories:

Flex. biopsy forceps
 Ø 3 Fr. WL 920 mm **829.601**

Flex. grasp. forceps
 Ø 3 Fr. WL 920 mm **828.651**

Universal sealing valve 1-6 Fr.
 (PU = 5 pcs), for introducing instruments from 1-6 Fr., sterile, for single use **4712348**

Luer sealing cap..... 15023205

