

# ENDOLIGHT LED 2.1 & 2.2

Light source technology perfected

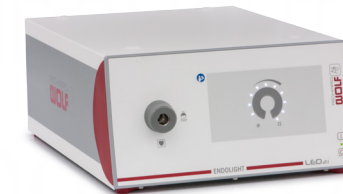
## The next generation

The ENDOLIGHT LED generation 2.1 & 2.2 have a light output comparable to a 300 watt xenon light source making video endoscopy applications possible.



### Ordering information

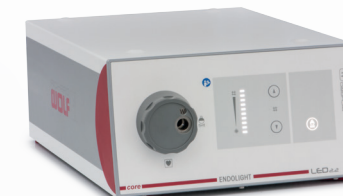
#### ENDOLIGHT LED 2.1



- Manual light control
- Light connection socket for Richard Wolf light cables
- Light cable recognition—standby mode activates if light cable is removed

ENDOLIGHT LED 2.1 Set  
comprising:  
ENDOLIGHT LED 2.1 (5163001)  
and power cable (N710235) ..... 51630011

#### ENDOLIGHT LED 2.2



core nova

- Light connection socket for light cables from different manufacturers\*
- Light cable recognition—standby mode activates if light cable is removed
- dialog.status
- dialog.brightness
- dialog.light balance
- SAFE START function\*\*
- core nova compatible

ENDOLIGHT LED 2.2 Set  
comprising:  
ENDOLIGHT LED 2.2 (5164001)  
and power cable (N710235) ..... 51640011

\* Compatible with light cables from: Karl Storz, Stryker, Olympus and ACMI

\*\* SAFE START: Automatic switch-on of the device after power failure. For Specifics, reference IFU GA-A307.

### Advantages you can expect from ENDOLIGHT LED generation 2.1 & 2.2 vs. traditional xenon technology:

- More consistent brightness emission
- Increased efficiency and cost savings
- Environmentally friendly

Specifications subject to change without notice.

1388-06-01-0716USA



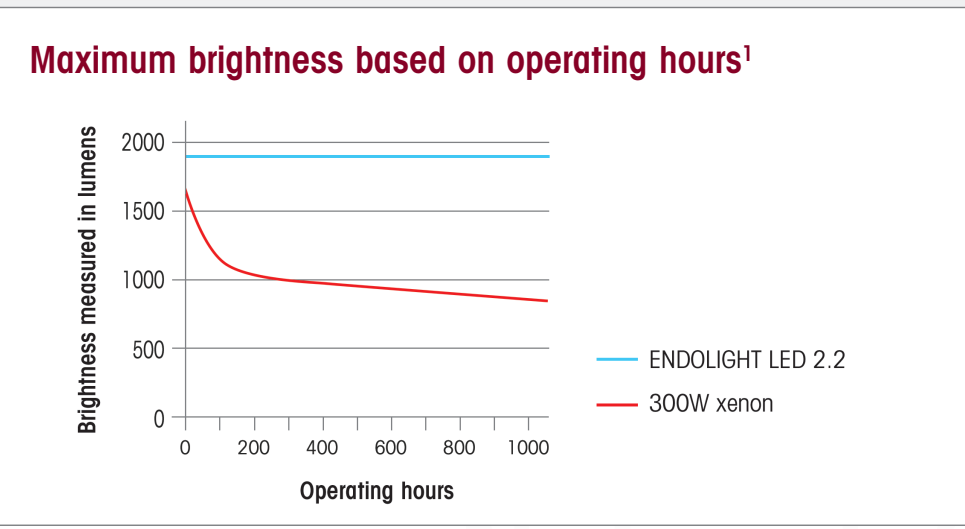
## ENDOLIGHT LED 2.1 & 2.2

Light source technology perfected

# Brighter, more efficient and consumer friendly

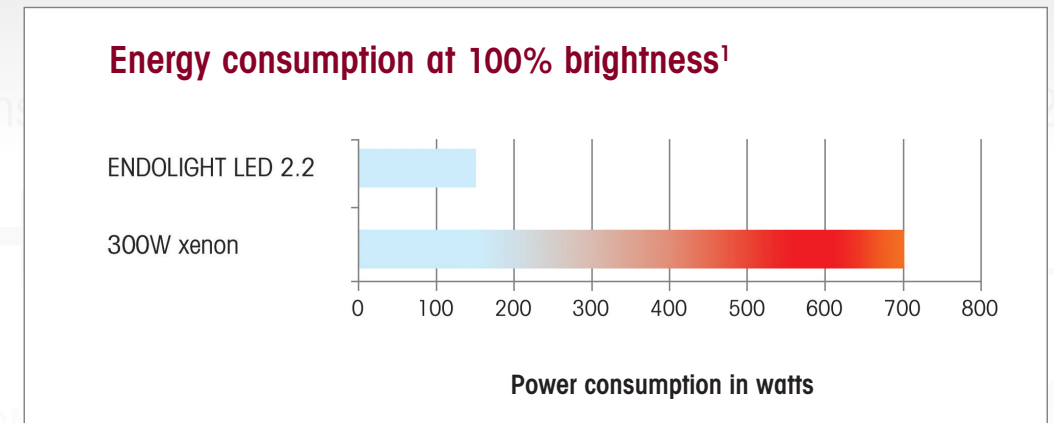
# Devices in *dialog*

## More consistent brightness emission



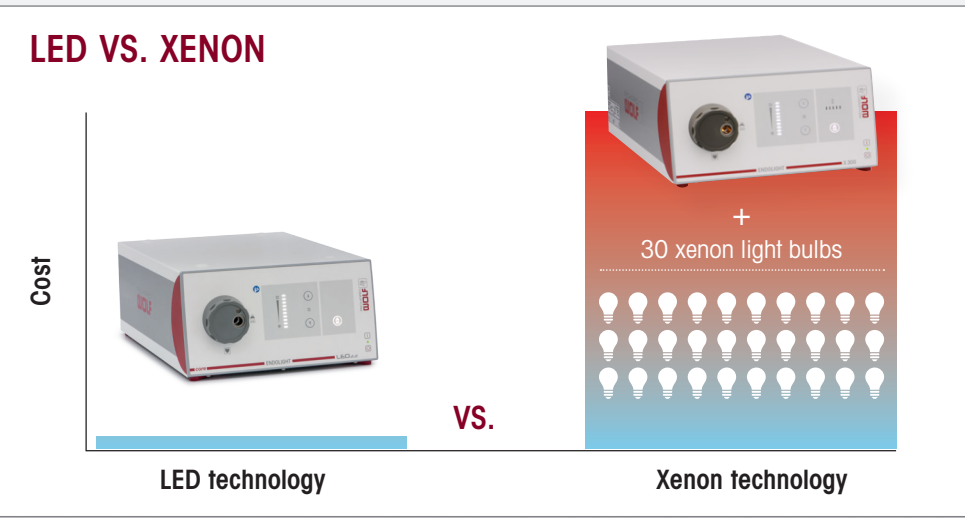
- Homogenous illumination with no decrease in brightness around the edges or in the center
- Flicker-free consistent brightness

## Environmentally friendly



- Approximately 80% less electricity consumption compared with xenon

## Increased efficiency and cost savings



- No recurring service costs as a result of the long life of the LED lamp

- 1 LED light source = approximately 30,000 operating hours
- 1 xenon light bulb = approximately 1,000 operating hours

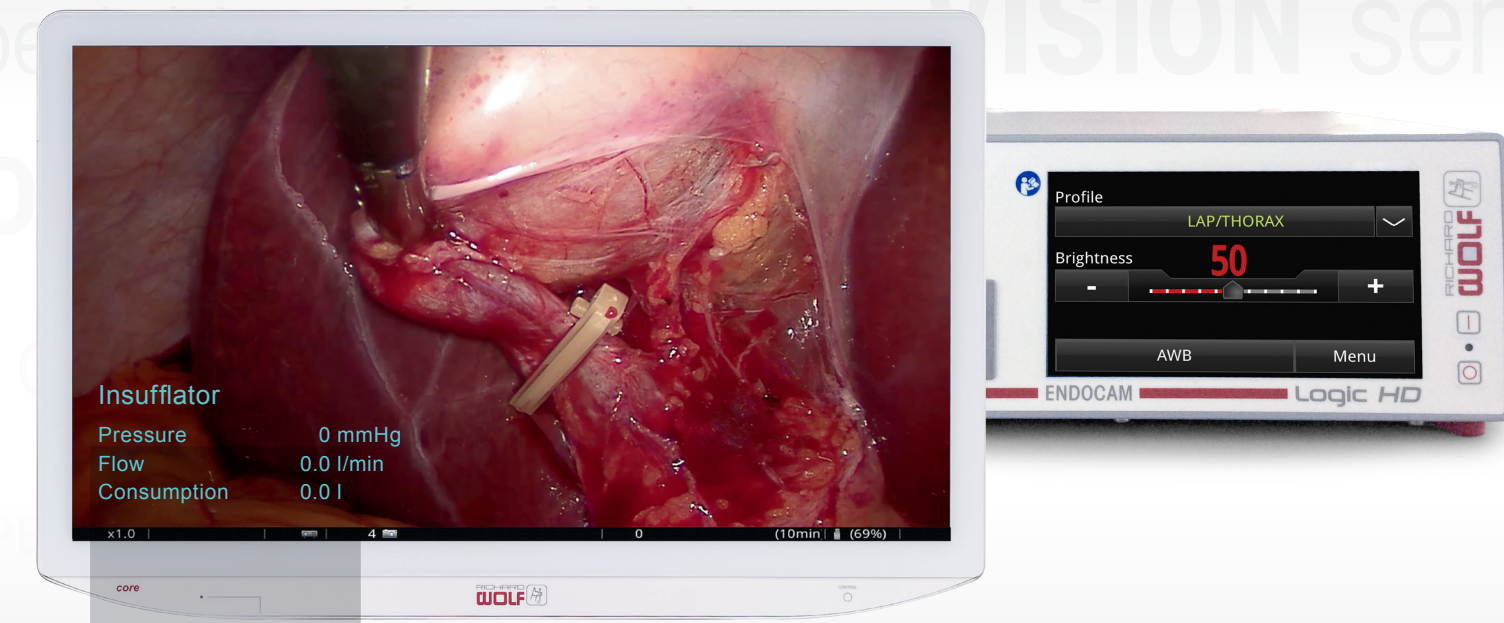


Image with original color reproduction

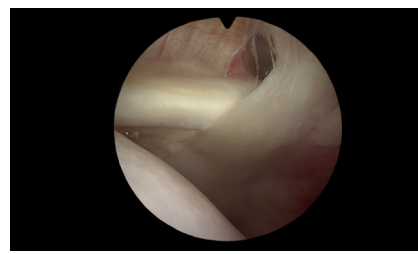
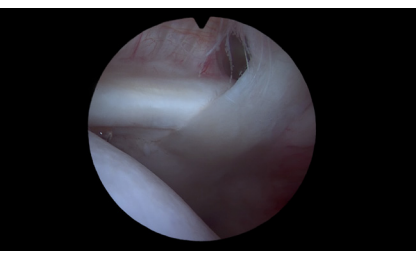
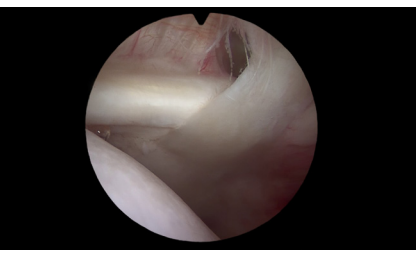
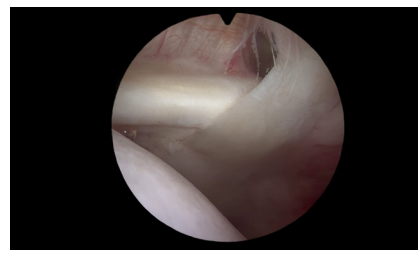


Image post color shift through brightness setting adjustment



*dialog*.light balance maintains color consistency regardless of light output level



Most Richard Wolf endoscopy devices work automatically as a system in *dialog* operation. *dialog* offers the following functions:

- *dialog*.status  
ENDOCAM® Logic HD displays light source status and insufflator data on the monitor
- *dialog*.brightness  
ENDOCAM® Logic HD automatically adjusts light output to an optimal level based on proximity to tissue
- *dialog*.light balance  
Enables a constant color reproduction through the complete brightness range of the LED

<sup>1</sup> Source: Laboratory measurements Richard Wolf GmbH