

Quality in Every Fiber



Fiber Light Cables

Fiber Light Cables

Quality in every fiber

Richard Wolf Medical Instruments' unique color coding system facilitates easier identification and accurate matching of endoscopes and light cables.

The color ring on the light cable corresponds to a matching color ring on the Richard Wolf endoscope light post making selection of the appropriate diameter light cable for each scope straightforward.

- Proprietary "snap-on" connector ensures an effortless and secure connection
- Steel coil for added protection
- Manufactured in Germany with high-quality fiberglass materials
- Universal adapters for compatibility with light sources and endoscopes from various manufacturers

Light cable color coding key by diameter

| |
|-------------------|
| ø 1.6 mm [blue] |
| ø 2.5 mm [green] |
| ø 3.5 mm [orange] |
| * ø 5.0 mm [gray] |

*Incorporates *Fusion* technology



Light cable color coding ring



Light post color coding ring



"Snap-on" connector



Fusion

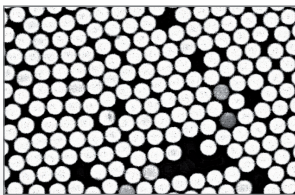
More light through Fusion

Richard Wolf developed a high-output *Fusion* light cable to complement our high-powered LED light sources.

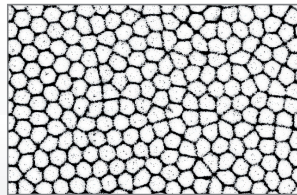
The *Fusion* light cable features fused glass fibers (on the light source connection end) that:



- Reduce the space between fibers resulting in approximately 20% more light transmission than standard light cables¹
- Provide high-temperature resistance



Standard light cable with adhesive filler reduces light output



Fusion High-temperature resistant light cable with reduced filler enhances light transmission

¹ Source: Laboratory measurements Richard Wolf Medical Instruments Corporation


Fiber Light Cables

Ordering Information

Light Cables

| Fiber Light Cable Bundle | Color Identification, Endoscope-side | Ø Fiber Bundle and Color Code | Length | Fiber Light Cable Part # | Fiber Light Cable Bundle Part # |
|--|---|-------------------------------|--------|--------------------------|---------------------------------|
|  <p>* Bundle includes: Fiber light cable, adapter for Richard Wolf light source (8095.07) and adapter for Richard Wolf endoscope (809509)</p> <p>Separate adapters are available for connection to products from other manufacturers (see page 5).</p> |  | 1.6 mm | 3.0 M | 80661630 | 806616301* |
| |  | 2.5 mm | 3.0 M | 80662530 | 806625301* |
| |  | 3.5 mm | 3.0 M | 80663530 | 806635301* |

Fusion Light Cable

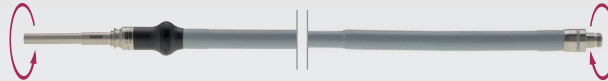
| Fusion Light Cable Bundle | Color Identification, Endoscope-side | Ø Fiber bundle and Color Code | Length | <i>Fusion</i> Light Cable Part # | <i>Fusion</i> Light Cable Bundle Part # |
|---|---|-------------------------------|--------|----------------------------------|---|
| <p>*Bundle includes: <i>Fusion</i> light cable, adapter for Richard Wolf light source (8095.07) and adapter for Richard Wolf endoscope (809509)</p> <p>Separate adapters are available for connection to products from other manufacturers (see page 5).</p> |  | 5.0 mm | 3.0 M | 80655030 | 806550301* |

Adapters



Ordering Information




Adapters for Light Cables

For connection to light sources from the following manufacturers:



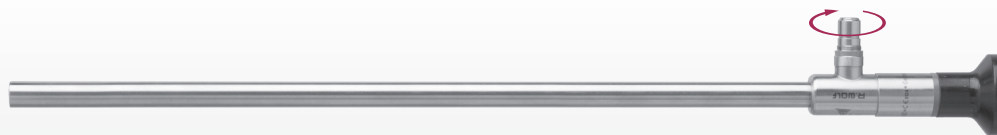
For connection to endoscopes from the following manufacturers:



| | |
|-----------------------------------|---|
| Richard Wolf, Stryker.....8095.07 |  |
| Karl Storz | no adapter necessary |
| Olympus.....8096.811 |  |

| | |
|---|--|
|  | Karl Storz.....8088.00 |
|  | ACMI, Circon, Karl Storz, Olympus, Stryker.....807001 |
|  | ACMI, Circon, Stryker, Olympus, Karl Storz.....807002* |
| <i>*Connection to competitor endoscopes without the use of an endoscope adapter</i> | |

Adapters for Richard Wolf Telescopes

For connection to light cables from the following manufacturers:



| | |
|---|----------------------|
|  | Olympus8088.80 |
|  | Olympus.....8088.81 |

| | |
|--|--|
|  | Karl Storz, Olympus, Stryker (screw-on).....808801 |
|  | ACMI + Circon.....8087.00 |

