

Bright. Clear. True.



PANOVIEW
ULTRA

A New Generation of UHD-Optimized
Telescopes



Bright. Clear. True.

With improved fiber optics and a superior lens system, Richard Wolf's PANOVIEW ULTRA Telescopes are optimized for ultra high definition 4K imaging. The optics housed in this series deliver a stunning level of brightness and clarity, bundled with exceptional steam sterilization durability.

Bright

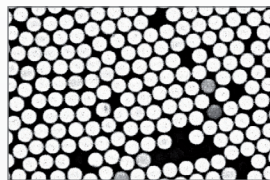
The demand for ultra high definition imaging in the OR requires telescopes that are capable of transmitting more light to a given surgical area. That's why we created the PANOVIEW ULTRA line. With an increased number of advanced optical fibers, these telescopes deliver more light than those made with standard fiber optic technologies.

Clear

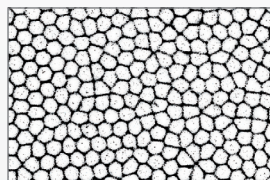
PANOVIEW ULTRA Telescopes are engineered with extra low dispersion glass rod lenses, which control chromatic aberrations and enhance image quality. The result: improved peripheral sharpness and a balanced sharpness gradient over wide fields of view and deep focal ranges.



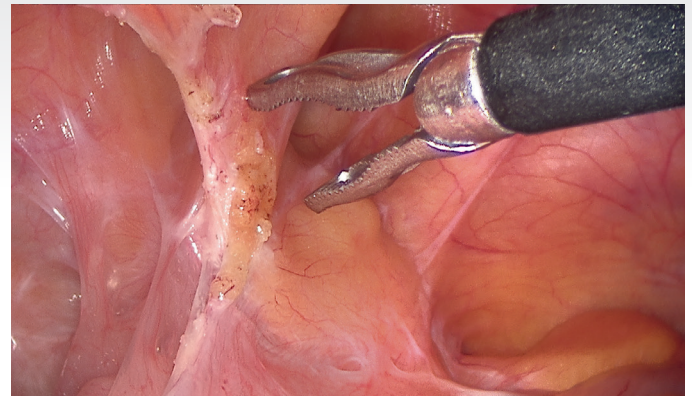
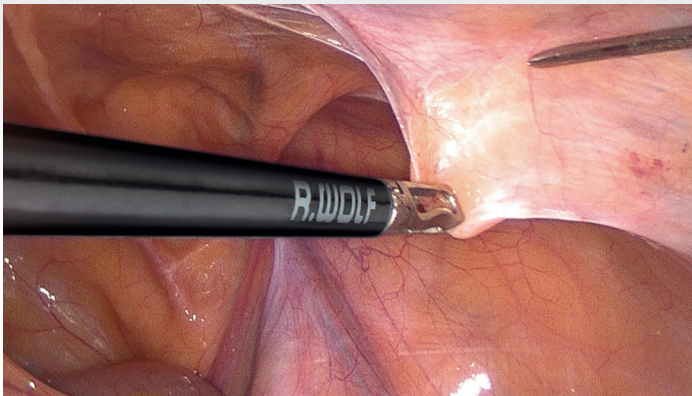
PANOVIEW ULTRA performs best when used with Richard Wolf's \varnothing 5 mm *fusion* light cable.



Standard light cable with adhesive filler reduces light output.



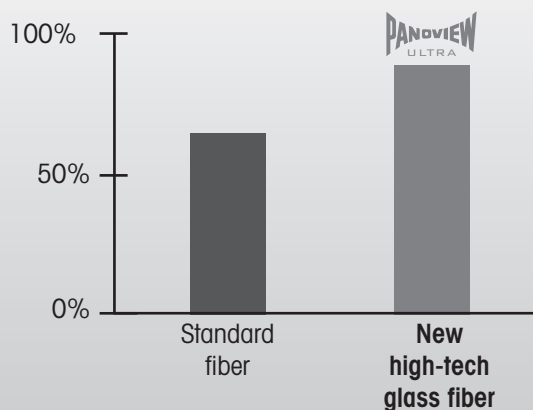
fusion
High temperature resistant light cable with reduced filler enhances light transmission.



True

Telescopes with traditional optic technologies can cause chromatic aberration, which is the distortion of color during light transmission. The advanced fiber optics housed in the PANOVIEW ULTRA Telescopes, however, generate brilliant natural color rendition as a result of reduced color shift and superior light transmission in the white spectrum.

Relative Light Transmission After 500 Autoclave Cycles



Simple Handling and Enhanced Sterilization Durability

The PANOVIEW ULTRA Telescopes can be used with light cables that are recommended for both 5 mm and 10 mm telescopes. This versatility prevents heat damage and eliminates the potential for staff error.

Our telescopes and light cables are both color coded, which makes selecting the right light cable very intuitive.

In addition to delivering brilliant illumination, the light fibers featured in the PANOVIEW ULTRA line are extremely durable. Extensive testing has shown that these telescopes maintain higher light transmission after hundreds of steam sterilization cycles compared to those made with traditional light fibers.

PANOVIEW ULTRA Telescope, Ø 5.5 mm,

WL 300 mm

0° **8935461**

30° **8935462**

WL 430 mm

0° **89354416**

30° **89354426**

PANOVIEW ULTRA Telescope, Ø 10 mm*,

WL 305 mm

0° **8934461**

30° **8934462**

50° **8934463**

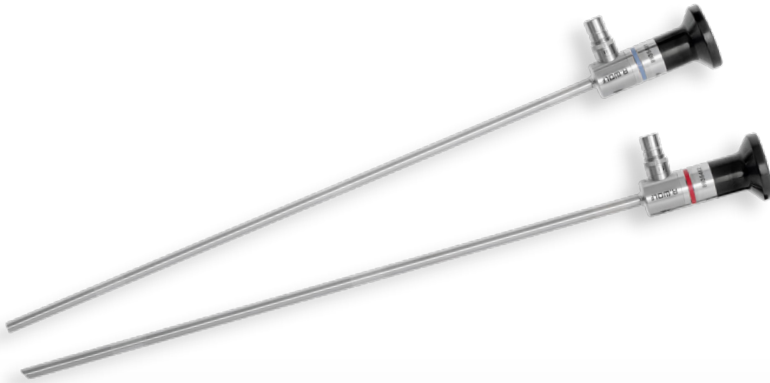
WL 440 mm

0° **89344416**

30° **89344426**

50° **89344436**

*Optimized for 4K UHD and NIR/ICG applications.



Recommended Light Cable:

Fusion Fiber Light Cable Bundle **806550301**

high-temperature resistant, Ø 5.0 mm, 3.0 m long

comprising:

Fiber light cable (80655030), adapter projector-side (809507) and adapter endoscope-side (809509)

Accessories:

Large Endoscope Tray, Plastic **8570.017**

5.5 mm or 10 mm, standard length, single telescope

Long Endoscope Tray, Plastic **8570.019**

5.5 mm or 10 mm, bariatric length, single telescope

Dual 10 mm Endoscope Tray, Plastic **8570.010**

Standard length telescopes



8570.017



8570.010

Specifications subject to change without notice.

1378-07.02-0922USA